

## POPULATION

271,140

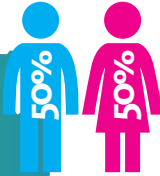


PROJECTED POPULATION  
IN 2020: **280,000**

72 SQUARE MILES

9TH LARGEST CITY IN TEXAS

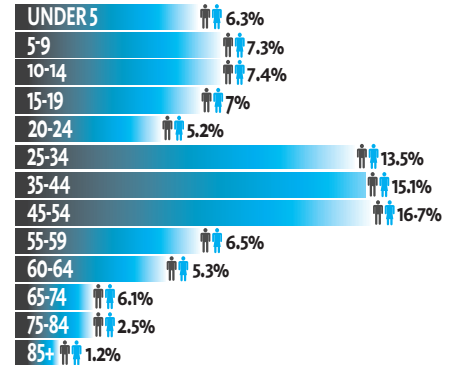
70TH LARGEST CITY IN UNITED STATES



### POPULATION HISTORY:

2000	222,030
2010	259,841
2013	263,122

### AGE DISTRIBUTION IN YEARS:



Median Age: 37.5

## OUTDOORS



HIKING OR WALKING TRAILS  
**94 MILES**  
BIKE TRAILS  
**167 MILES**

## GOLF COURSES

PUBLIC	PRIVATE
PECAN HOLLOW GOLF COURSE	LOS RIOS GOLF CLUB
RIDGEVIEW RANCH GOLF CLUB	GLENEAGLES COUNTRY CLUB
	PRESTONWOOD COUNTRY CLUB



## PARKS & OPEN SPACES



## COMMUNITY DETAILS

NEIGHBORHOODS	72
NUMBER OF SWORN POLICE OFFICERS	348
POLICE STATIONS & STOREFRONTS	6
FIRE STATIONS	13
LIBRARIES	5
FESTIVALS & COMMUNITY GATHERINGS	5

COMMUNITY PARKS: 23	1,282 ACRES
LINEAR PARKS: 15	639 ACRES
SPECIAL USE FACILITIES: 9	43 ACRES
DOG PARKS: 1	2 ACRES
NEIGHBORHOOD PARKS: 31	256 ACRES
CITYWIDE OPEN SPACE PRESERVE: 3	1,324 ACRES

RECREATION CENTERS	5
PLANO AQUATIC CENTER	18,580 SF
CARPENTER PARK RECREATION CENTER	64,000 SF
LIBERTY RECREATION CENTER	30,000 SF
OAK POINT RECREATION CENTER	88,000 SF
TOM MUEHLENBECK RECREATION CENTER	88,000 SF
PLANO SENIOR RECREATION CENTER	21,753 SF

Source: City of Plano

